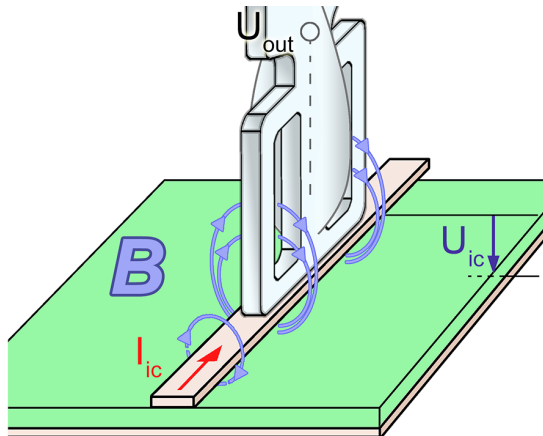


HR-R 8-1

Near-field probe up to 40 GHz B-field



Short description

The HR-R 8-1 is a passive near-field probe for measuring magnetic fields up to 40 GHz. The measuring tip is decoupled from the cable shield by special damping systems. In addition, the probe contains a current attenuator. The probe has a internal matching network to 50 ohm.

The special probe head of the HR near-field probe enables magnetic field measurements to be taken directly on IC pins or individual conductor tracks to localize B-field sources.

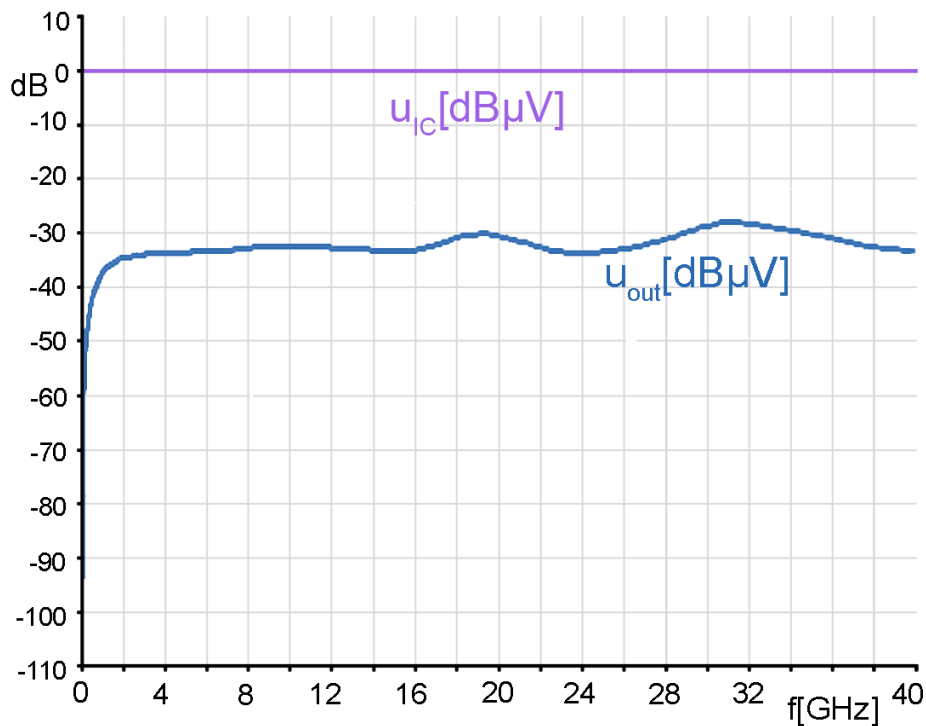
Technical parameters

upper cut-off frequency	40 GHz
Output resistance	50 Ω
Connector - output	2.92 mm (K), female, jack
Weight	19 g
Sizes (L x W x H)	(147 x 9 x 9) mm

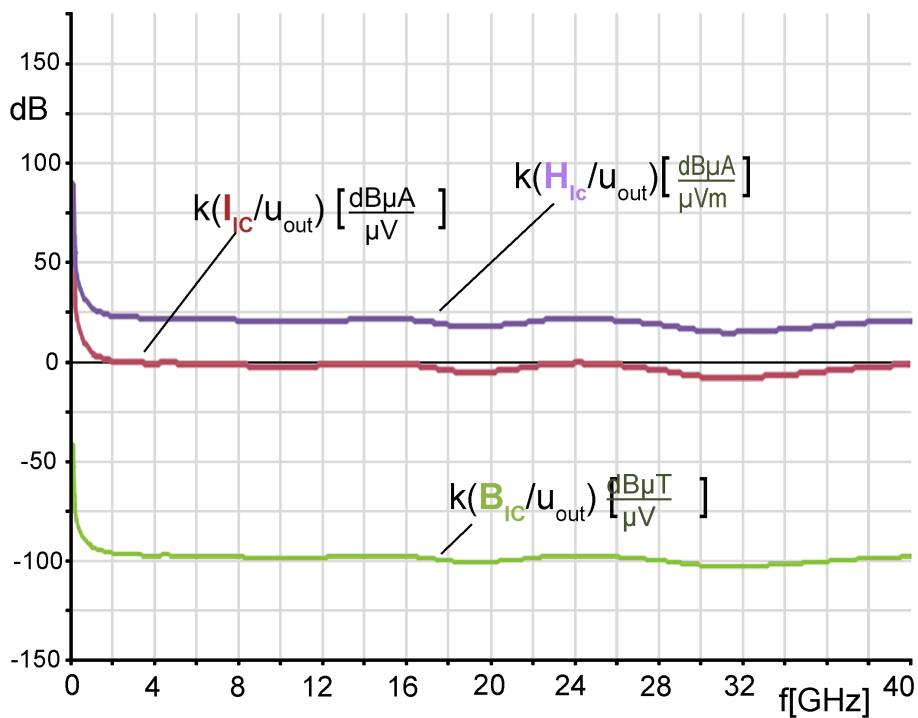
HR-R 8-1

Near-field probe up to 40 GHz B-field

Frequency response



Correction curve

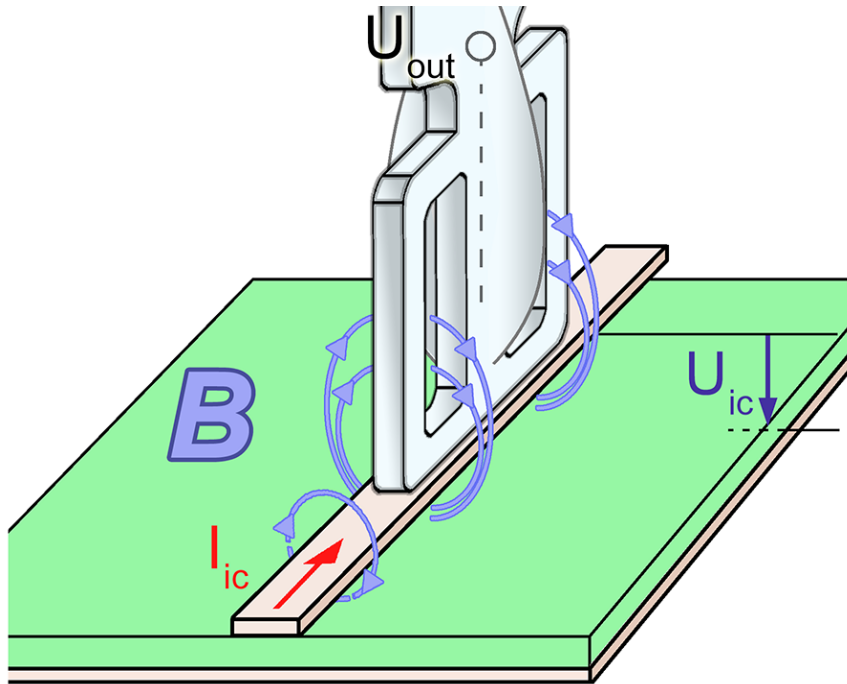


HR-R 8-1

Near-field probe up to 40 GHz B-field

LANGER
EMV-Technik

Measuring principles



HR-R 8-1 B-Field probe head



HR-R 8-1

Near-field probe up to 40 GHz B-field

HR-R 8-1 B-Field probe with Probe Holder SH 02 over coplanar line CPL 40-01 38 in a test set up

